

Introduction to Archaeological GIS

Classifications of GIS Use and Examples

- Inventory
- Spatial Analysis
- Publication

Examples of GIS in Archaeology

Inventory

- Jacksonville Chinese Laundry
- Rosewood

Spatial Modeling

- Predictive Modeling of site locations
- Viewsheds

Publication

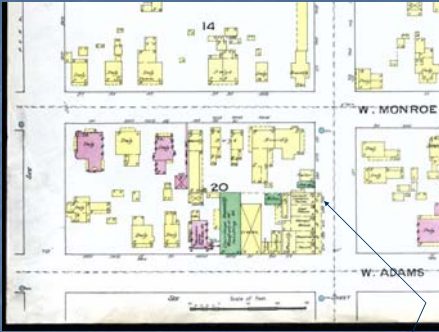
- Public Archaeology in New Zealand
- Standard report/chapter/article illustrations

Pine Street Chinese Laundry (1884-1891)



I began my search for the Chinese in Jacksonville with the Sanborn maps.
Here is a section from the 1884 Sanborn for Jacksonville, showing a Chinese Laundry.

Pine Street Chinese Laundry (1884-1891)



Then, I decided to track the changes to this building.
Here is the 1887 map, showing a Chinese Laundry & Tailor

Pine Street Chinese Laundry (1884-1891)



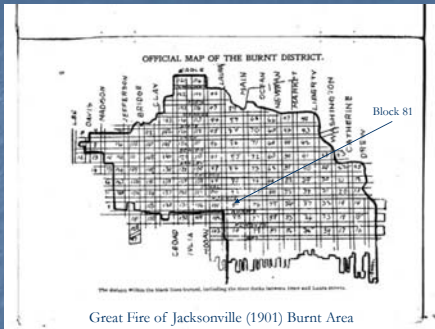
By 1891, the building was there, but apparently the Chinese laundry had moved out, leaving a Vacant building.

Pine Street Chinese Laundry (1884-1891)



Unfortunately, I have been able to get at the 1897 Sanborn for Jacksonville.
However, when I looked at the 1903 map, the entire area had changed.

Pine Street Chinese Laundry (1884-1891)



Great Fire of Jacksonville (1901) Burnt Area

I had no idea why, until a fellow student here at UFL told me that the entire downtown area of Gainesville had burned in 1901.

Pine Street Chinese Laundry (1884-1891)



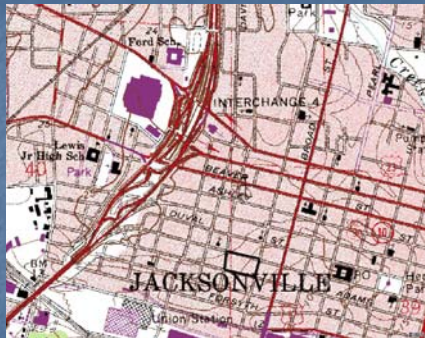
Then I was able to see the block in 1913 – which was originally numbered 20 prior to 1890, but then became 81 after the fire.

Pine Street Chinese Laundry (1884-1891)



I then matched these historic maps with a modern day road atlas to find the location as it exists currently.

Pine Street Chinese Laundry (1884-1891)



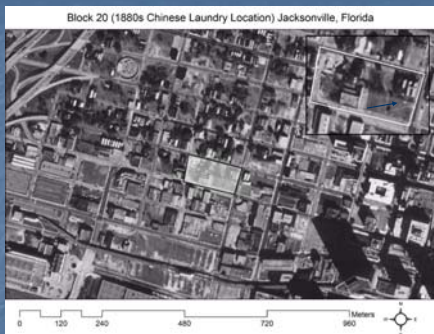
I then matched these historic maps with a modern day road atlas to find the location as it exists currently, including the topographic map.

Pine Street Chinese Laundry (1884-1891)



This allowed me to identify Block 20/81 on a 1960 aerial. It appears that the exact location of the Chinese Laundry is mostly clear.

Pine Street Chinese Laundry (1884-1891)



In fact, it was still mostly clear in 1994, at least where I believe the laundry must have been placed in the 1880s.

Pine Street Chinese Laundry (1884-1891)



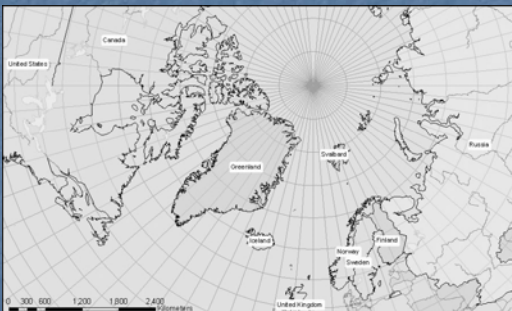
Unfortunately, as of 2004 the site has been built upon. I will continue to research the site and use it as a tool to educate against this type of lost opportunity.

Pine Street Chinese Laundry (1884-1891)

Comments & Next Steps:

- the 1880 census shows 1 Chinese in Duval County (Jacksonville, FL)
- a 1988 cultural impact study was conducted, I need to get a copy from the CRM firm that was contracted to do it (I suspect nothing beyond a foot survey was done)
- research through census rolls and attach a name to the Laundry, also look for city directories (do they exist that early? probably not.)
- Attempt to find another source of data that could place the laundry's establishment before 1884
- look up chain of title and more fully document the history of the block
- use this research as a case study in one or more articles, using Jacksonville as an 'anywhere USA' to demonstrate the erasure of Chinese from many local memories outside of the western US

Using ArcGIS to Create 'Living Documents' with Archaeological Data:
A Case Study from Spitsbergen, Norway



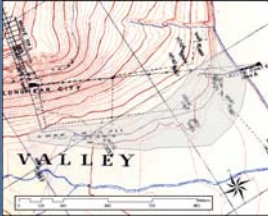
Using ArcGIS to Create 'Living Documents' with Archaeological Data:
A Case Study from Spitsbergen, Norway

Using the 2004 Svalbard GIS to Answer Questions

Analysis – Potential for Future Predictive Modeling and Viewsheds of Power

Predictive Model for Site Protection
Combine Archaeological Data with Environmental Data
Predict locations on Spitsbergen that require immediate investigations

Viewsheds of Power



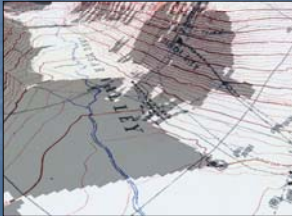
Using ArcGIS to Create 'Living Documents' with Archaeological Data:
A Case Study from Spitsbergen, Norway

Using the 2004 Svalbard GIS to Answer Questions

Analysis – Potential for Future Predictive Modeling and Viewsheds of Power

Predictive Model for Site Protection
Combine Archaeological Data with Environmental Data
Predict locations on Spitsbergen that require immediate investigations

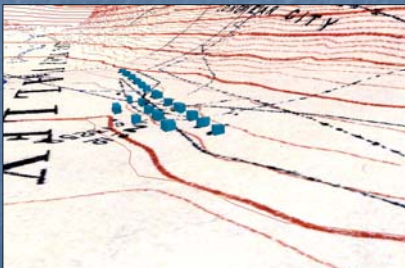
Viewsheds of Power



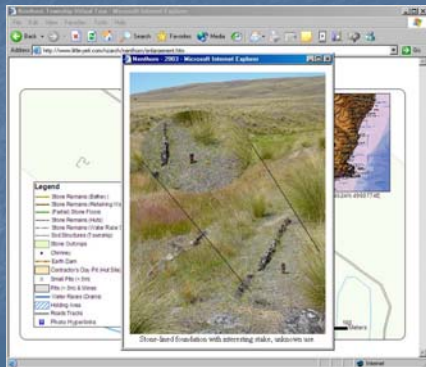
Using ArcGIS to Create 'Living Documents' with Archaeological Data:
A Case Study from Spitsbergen, Norway

Using the 2004 Svalbard GIS to Answer Questions

Presentation – Virtual Reconstructions of Old Longyear City



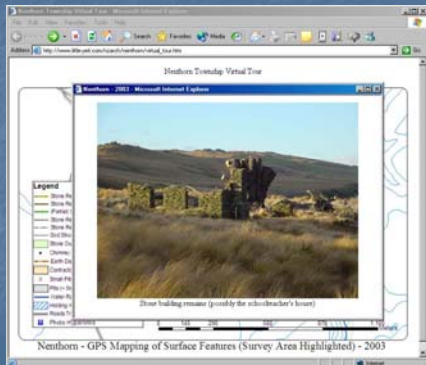
Geographical Information Systems (GIS) and Archaeology



Geographical Information Systems (GIS) and Archaeology



Geographical Information Systems (GIS) and Archaeology



Examples of GIS in Anthropology

Standard report/chapter/article illustrations